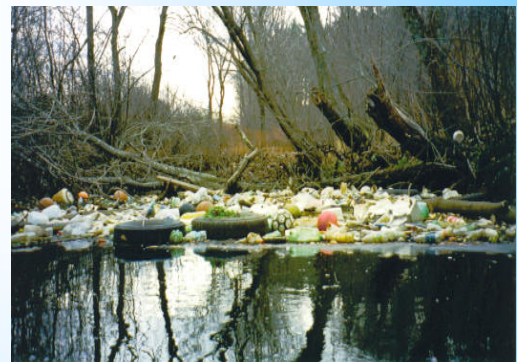
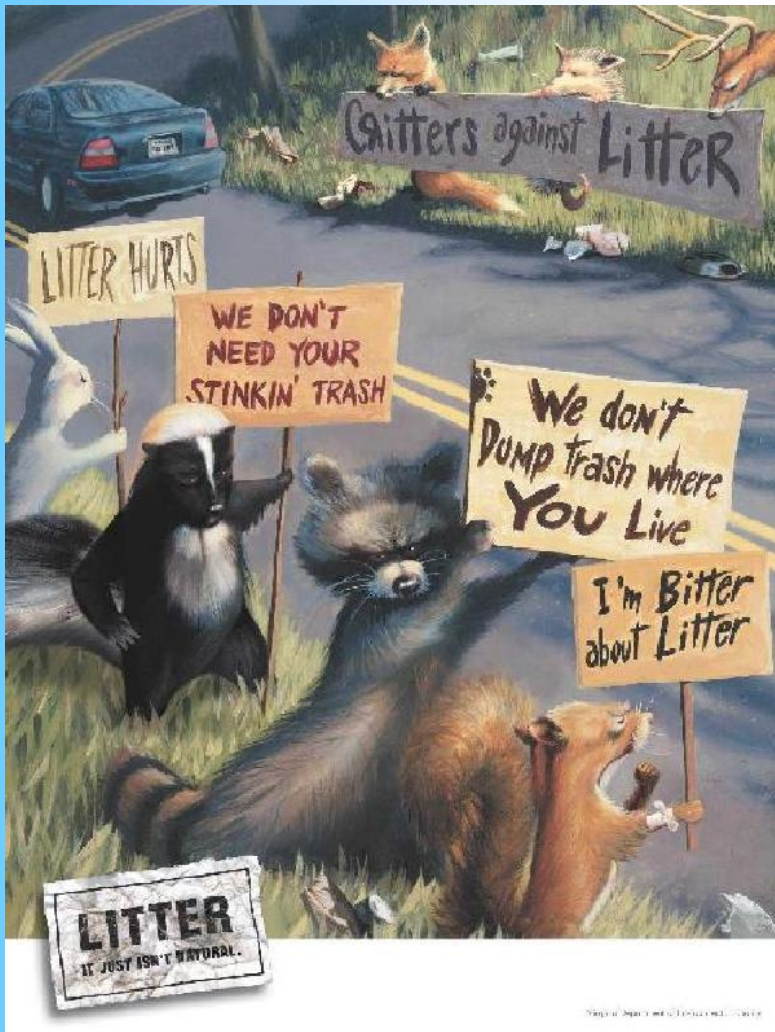


Tony the Trashbag

This educational activity focuses on how a simple plastic bag can be harmful to the environment. Students track the movement of a piece of litter as it moves through different land & aquatic environments. The activity has nine different stations: road ditch, front yard, tree, storm drain, pond, stream/river, ocean, farm field, and turtle. Program begins with a sad poster titled "Litter Kills" & a lecture on the harmful effects of litter, and the importance of recycling and caring more about our environment!



Litter in a stream.



Turtles mistake plastic for jellyfish, a common food source.