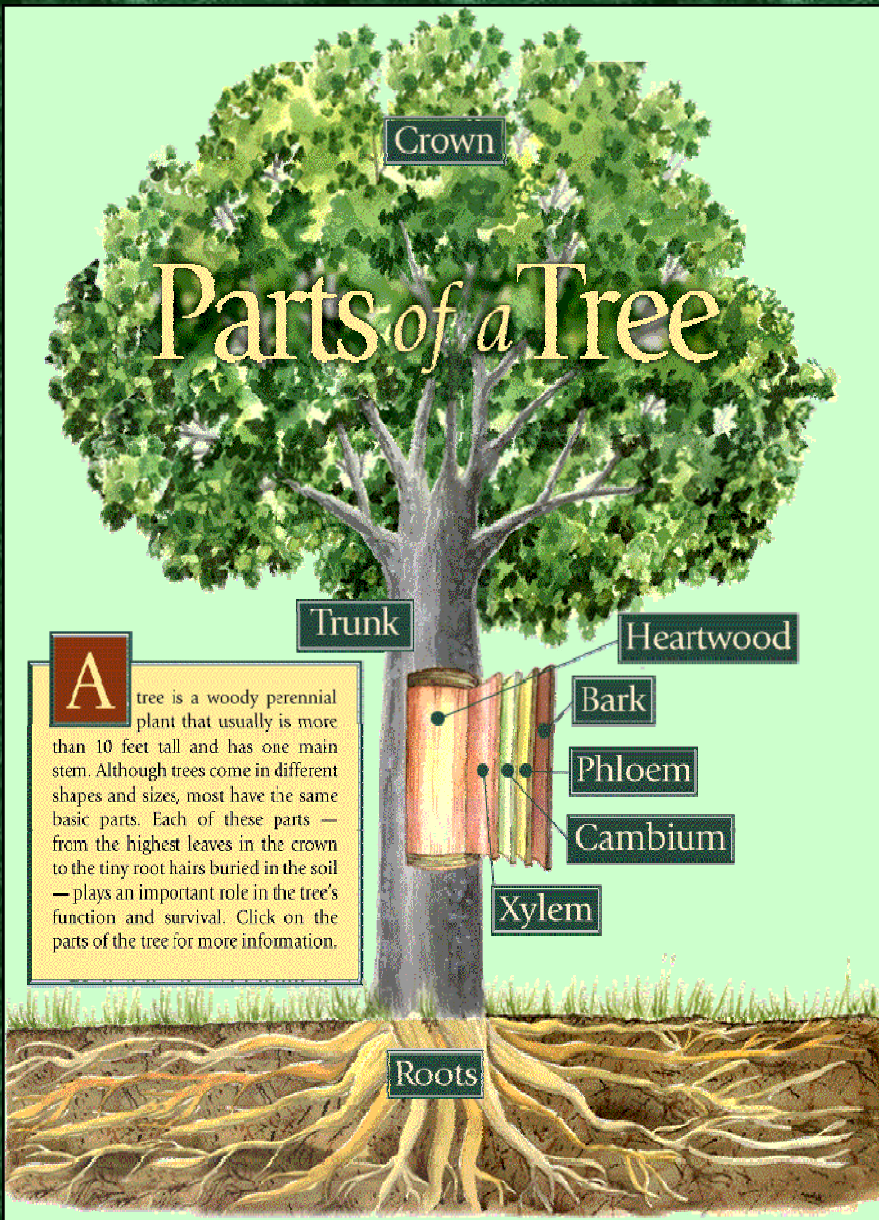


TREEMENOUS TREES

All of the students get involved in this educational program as they learn about the importance of trees, and the parts of a tree. Students learn the names and functions of the parts of a tree as they build a human tree from the inner hardwood to the outer bark and leaves. This is best when done with a large group, or even for an all- school assembly.

(Grades K-6, 40 minutes—1 hr.)



A Tremendous Tree program involves the entire student body as they form a human tree, and shout out the parts of the tree they have just learned. This is also a good way to learn about basic plant parts and function.

