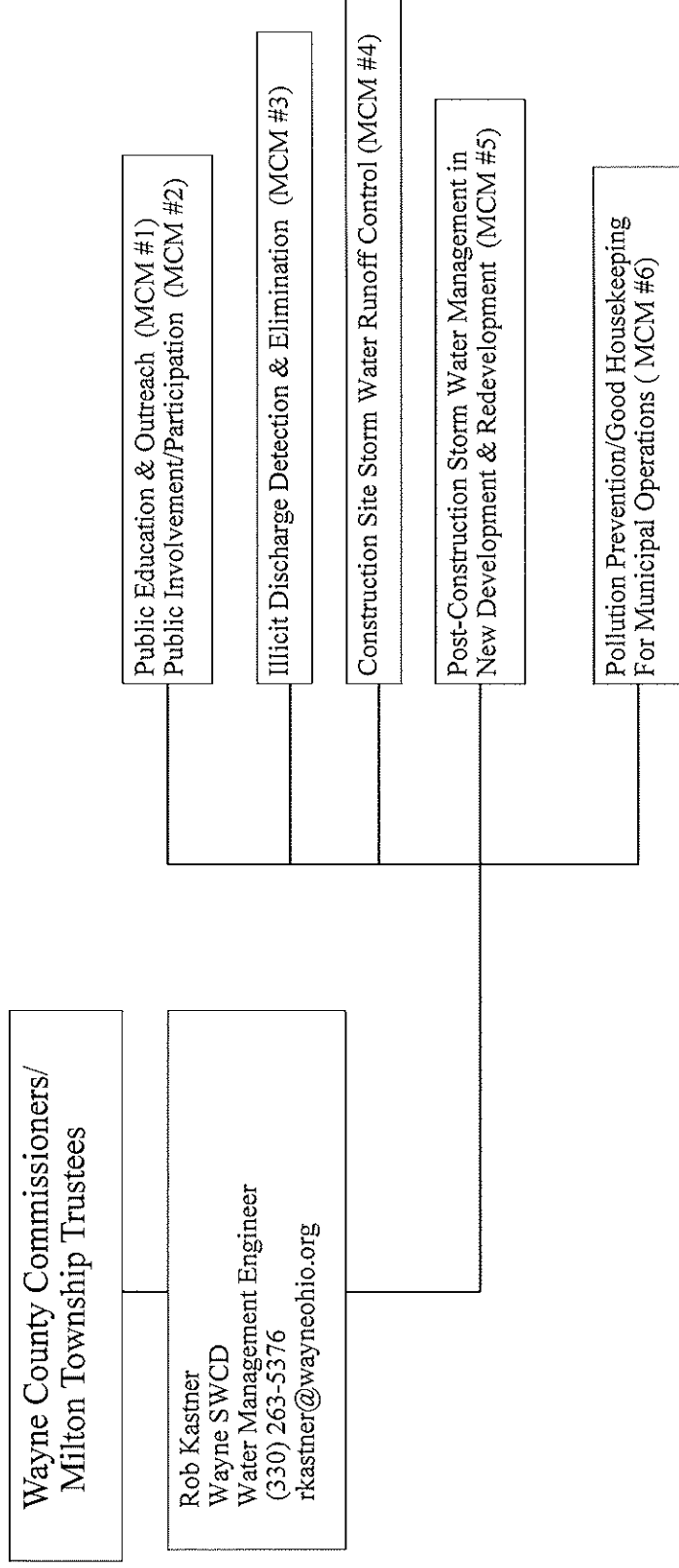
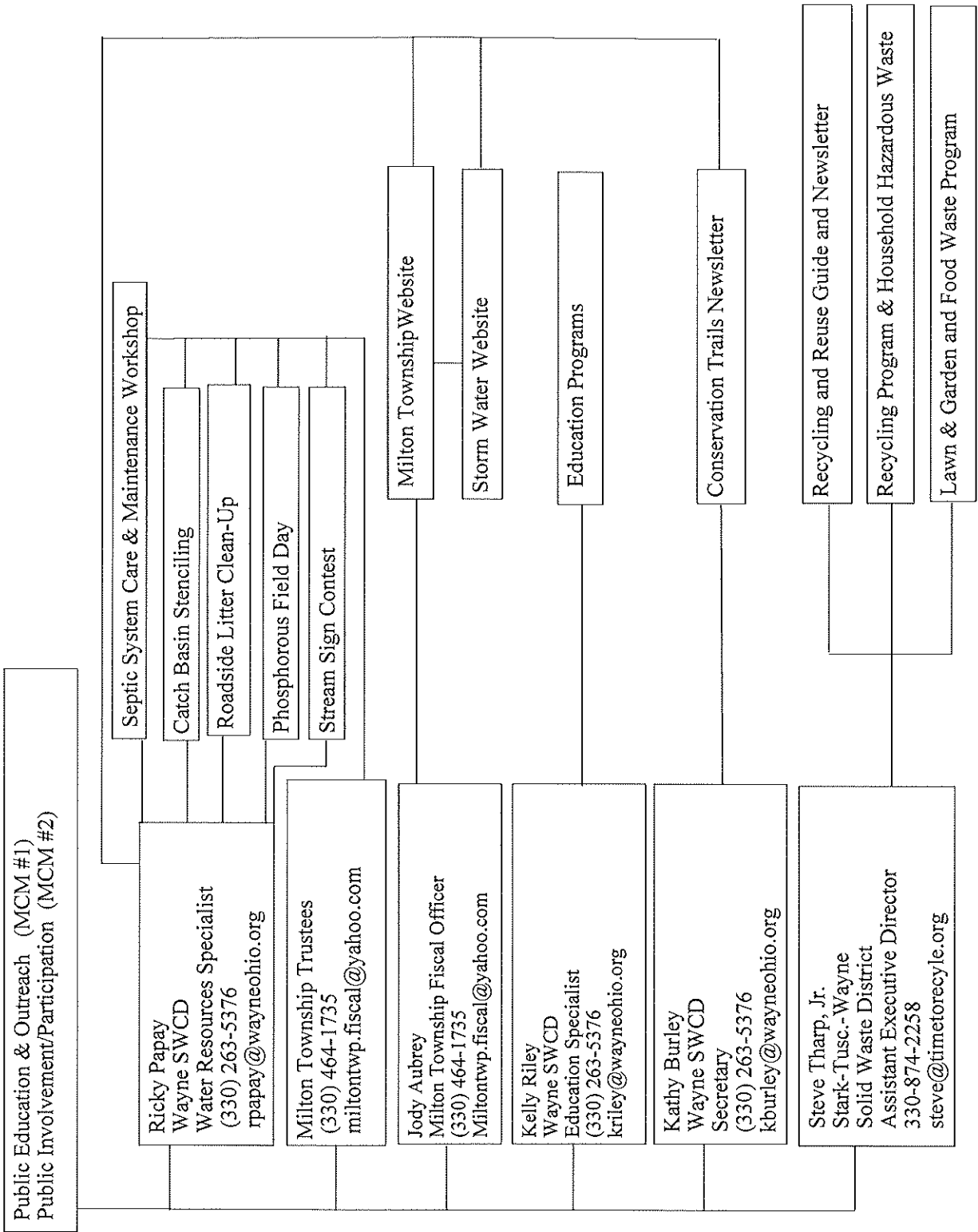


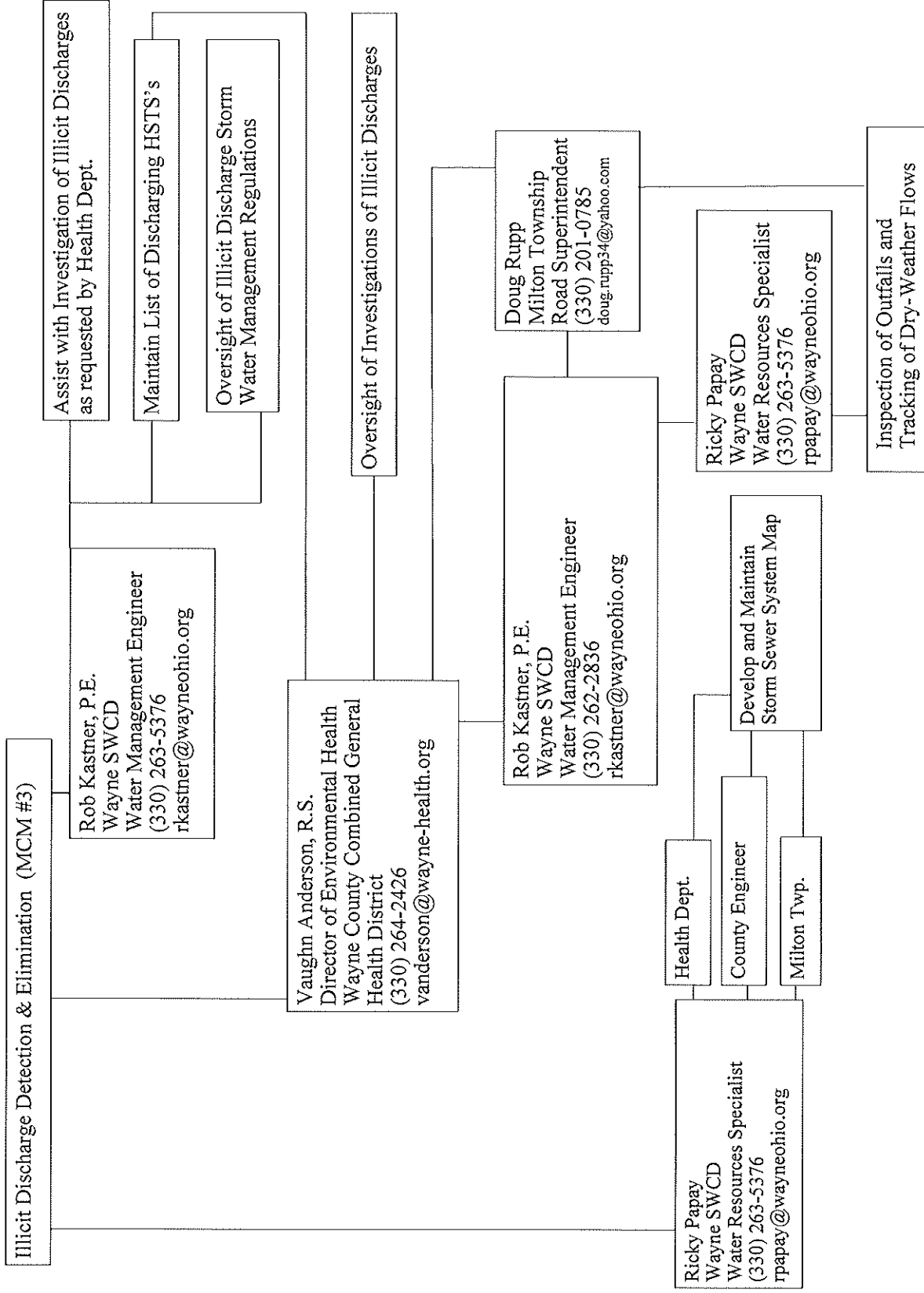
Wayne County / Milton Township Small MS4 General Permit Storm Water Management Plan

Table of Organization

Overall Program Responsibility







Construction Site Storm Water Runoff Control (MCM #4)

Rob Kastner/Ricky Papay
Wayne SWCD
Water Management Engineer
Water Resources Specialist
330-263-5376
rkastner@wayneohio.org
rpapay@wayneohio.org

Administer Wayne County Stormwater
Management Regulations

Scott Miller, P.E., P.S.
County Engineer
County Engineer's Office
(330) 287-5500
sam@wayne-county-engineer.com

Activities Disturbing 1 Acre or More,
Larger Common Plan Disturbing
1 Acre or More or Creating More than
20,000 sq ft New Impervious Surface

Review SWP3 attached
to CAP for S & E Controls and
Conformance to the Regs.

Inspect S & E Controls, including
outside road Right-of-Way
(R-O-W) in Major Subdivisions

Activities Disturbing Less than 1
Acre and less than 20,000 sq. ft. of
New Impervious Surface

Identify Sediment & Erosion,
(S & E) Control Measures for each
Activity during Construction
Application for Permit (CAP)
Process

Administer Engineering Code for
Subdivision Development

Inspect S & E Control
Measures for New Houses
and Commercial Buildings

Major Subdivisions in
Road R-O-W

Review Erosion & Sediment Control
Plan and Drainage Plan

Inspect S&E Measures and Storm
Water Conveyance/ Post-Construction
System During Construction

Post-Construction Storm Water Management in New Development & Redevelopment (MCM #5)

Rob Kastner, P.E.
Wayne SWCD
Water Management Engineer
(330) 263-5376
rkastner@wayneohio.org
Ricky Papay
Wayne SWCD
Water Resources Specialist
(330) 263-5376
rpapay@wayneohio.org

Activities Disturbing 1 Acre or More,
Larger Common Plan Disturbing 1 Acre or
More, or Creating More Than 20,000 sf. New
Impervious Surface

Administer Wayne County Stormwater
Management Regulations

Green Infrastructure Seminar

Review SWP3 for Conformance of the
Post-Construction BMP's to the Regs.

Inspect Construction of the Post-
Construction BMP's

Review Wayne County
Permit Notice of Termination
and Attachments, Including BMP
As-Built Drawings, Certification Letter,
Etc.

Inspect Post-Construction BMP's
During 1-Year Warranty Period

Review Inspection Reports and In-
spect Post-Construction BMP's at
the Owner's Request following
Warranty Period for Compliance
with Operation & Maintenance
Plan.

